

Login to your Meridian Account and click on History on the left menu.

Meridian Trust Federal Credit Union  
P.O. Box 548  
Cheyenne, WY 82003  
800-726-5644

Ellen Davis [ Sign Out ]

Balances  
Bill Pay  
Check Ordering  
Contact Us  
e-Statements  
**History**  
Loan Advances  
Loan Application  
Loan Payments  
Log-in Options  
Messages  
Tax Info  
Transfers  
Transfers - Automatic  
Withdrawals  
X Loan Payments  
X Transfers  
Sign Out

**Suffix Selection**  
Select the suffixes below to get history:

Shares:  Include All Shares  
Certificates:  Include All Certs  
Loans:  Include All Loans

**Draft Selection**  
 Search by Draft  
Beginning:   
Ending:   
Continue

**Date Range**  
Today This Month 1 Month 2 Months  
Start Date: 12/10/2007  
End Date: 01/10/2008

**Output Options**  
Output Format: On Screen  
Order: Ascending

**Information:**  
Use the different available options to customize your account history report.

On the History page, choose to include Shares and choose either Checking or Savings. Set the Output to Quicken 2005+ (OFX) and click Continue.

Meridian Trust Federal Credit Union  
P.O. Box 548  
Cheyenne, WY 82003  
800-726-5644

Ellen Davis [ Sign Out ]

Balances  
Bill Pay  
Check Ordering  
Contact Us  
e-Statements  
History  
Loan Advances  
Loan Application  
Loan Payments  
Log-in Options  
Messages  
Tax Info  
Transfers  
Transfers - Automatic  
Withdrawals  
X Loan Payments  
X Transfers  
Sign Out

**Suffix Selection**  
Select the suffixes below to get history:

Shares:  Include 009-Checking  
Certificates:  Include All Certs  
Loans:  Include All Loans

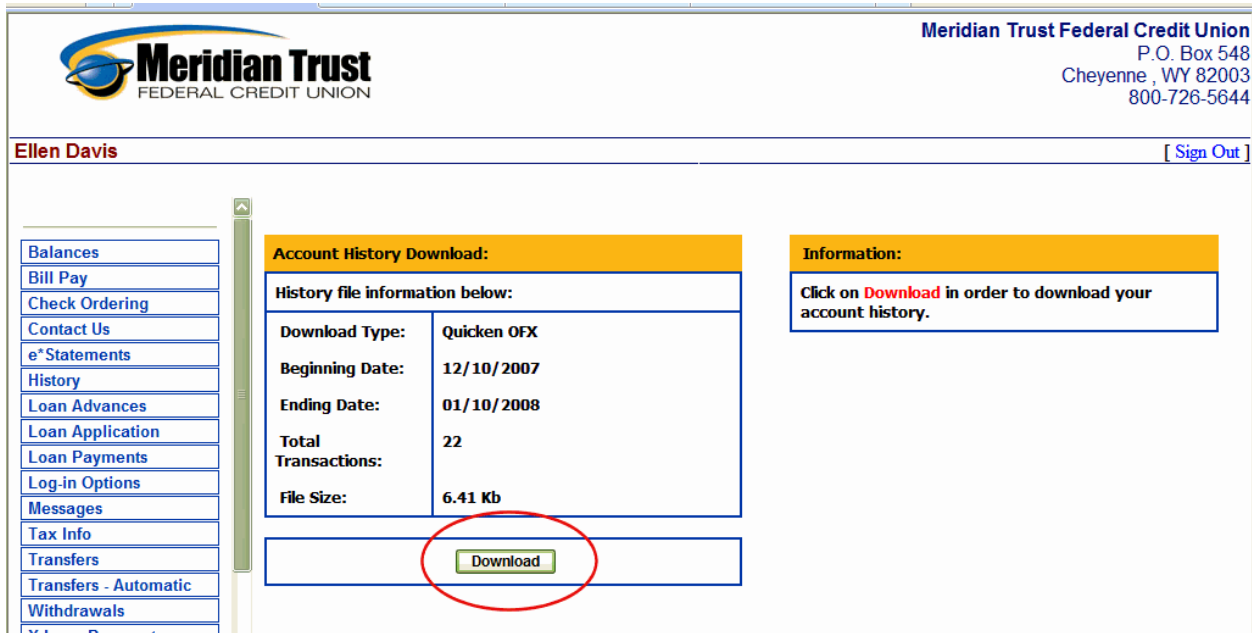
**Draft Selection**  
 Search by Draft  
Beginning:   
Ending:   
Continue

**Date Range**  
Today This Month 1 Month 2 Months  
Start Date: 12/10/2007  
End Date: 01/10/2008

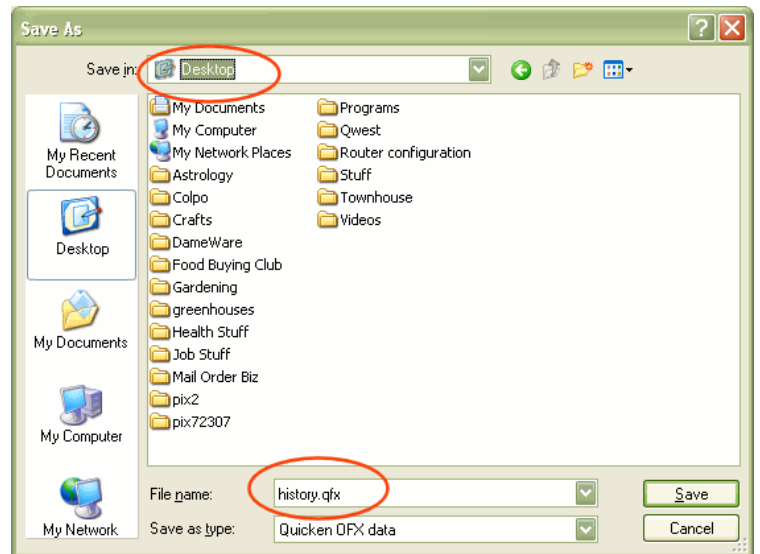
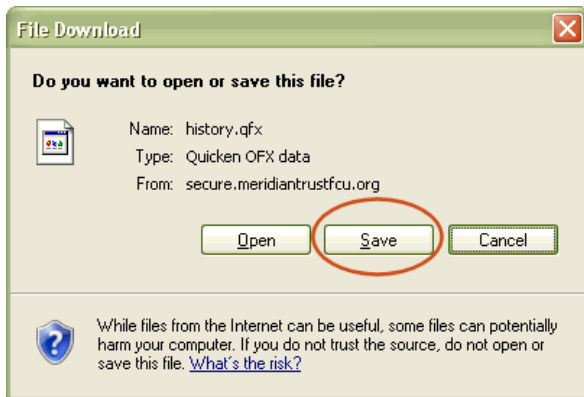
**Output Options**  
Output Format: Quicken 2005+ (OFX)  
Order: Ascending

**Information:**  
Use the different available options to customize your account history report.

On the Download page, click the Download button.

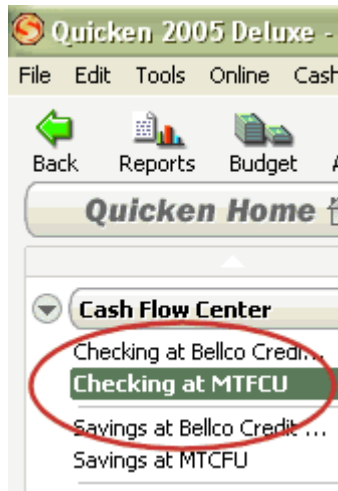


On the File Download dialog box, choose to Save the file and then choose the location where you want to save the file.

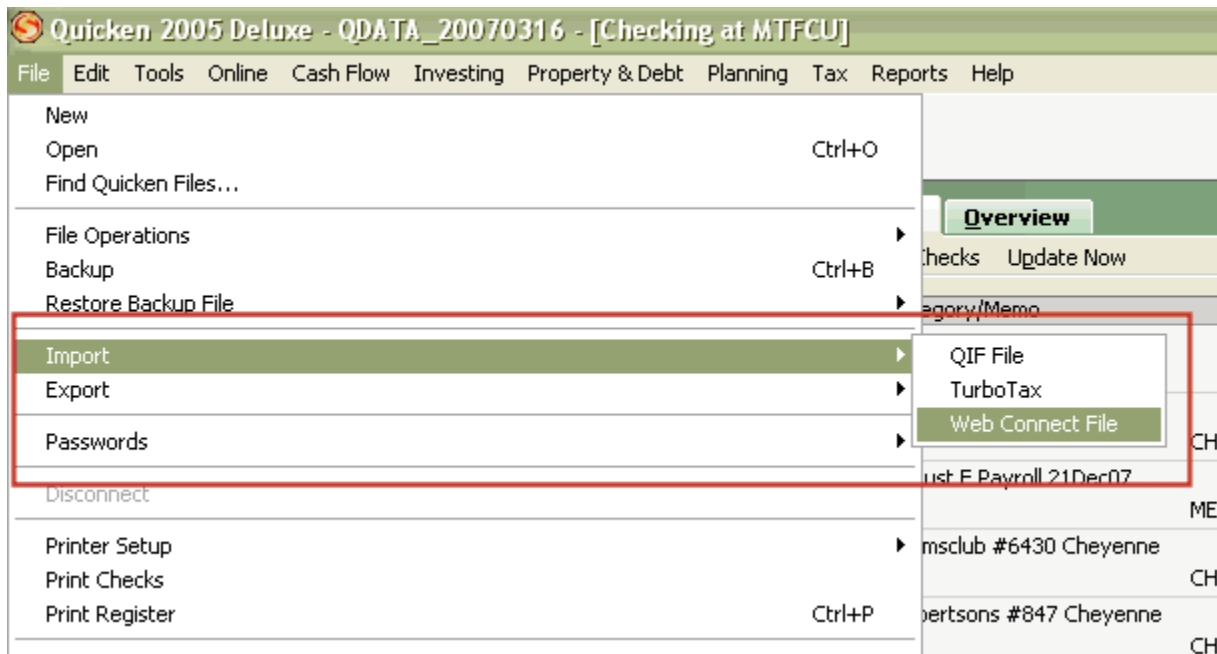


Log out of your Meridian account. Open Quicken.

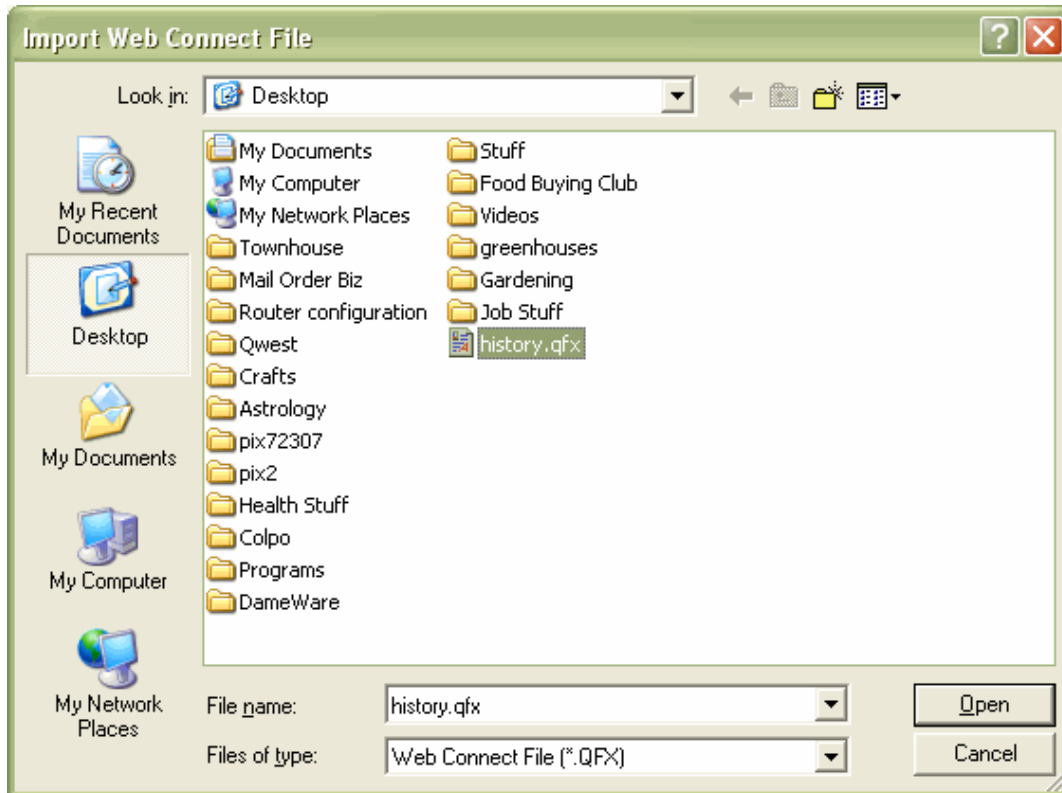
Once Quicken is opened, click on the account into which you want to import the Meridian account transactions.



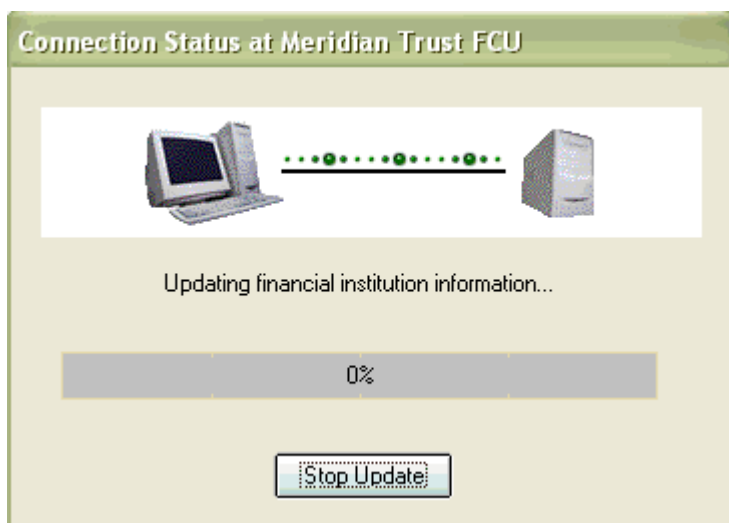
Once the account is chosen, go to File, Import, Web Connect File.



Find the history.qfx file that you previously downloaded from your Meridian account.



Click Open. The file will begin importing.



Once it is done, you can now go back to your Quicken account, and if there are new transactions, they will be listed below where you can accept them.